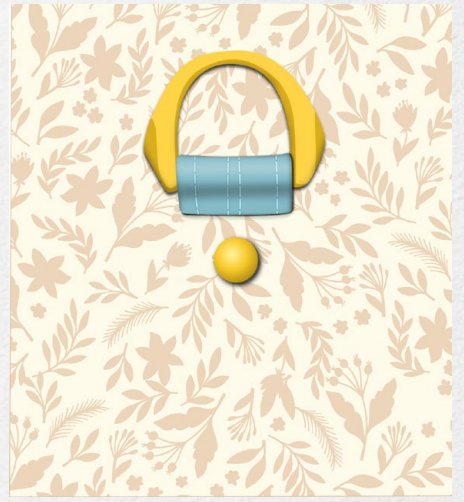


# Strap Connectors



© All rights to this e-book and images belong to **Shamballa Bags (Sammy Valencia)**.

*Please do not reproduce, distribute, sell, or share any part of this tutorial. It is for your own use only. Each person who wishes to use this tutorial should download their own copy.*

**[www.shamballabags.com](http://www.shamballabags.com)**

## Simple Connector (Option 1)



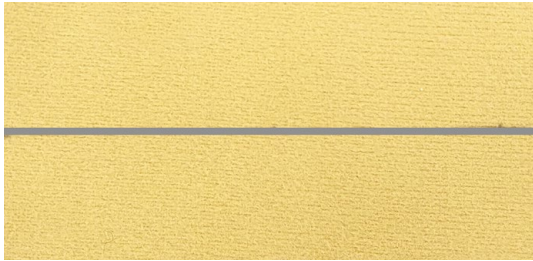
### *Materials:*

- ☐ Basic sewing supplies.
- ☐ 4 rectangles or rings: 2.5 cm (1") or 2 cm (3/4") according to the size you prefer for your straps.
- ☐ Sewing clips.
- ☐ Double-sided tape 6 mm (1/4") or glue for faux leather or fabric (depending on the material used for the connector).
- ☐ 4 Rivets: 9 mm (3/8") (Optional).



*Instructions:*

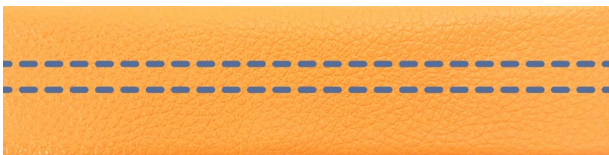
1. Take connector piece and transfer the line that is included on the pattern piece (wrong side).



2. Use glue or double-sided tape. Bring the edges towards the center



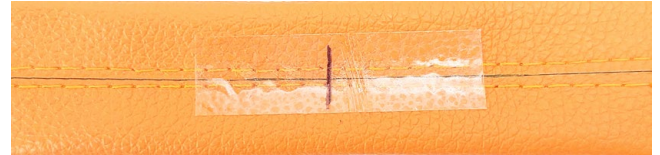
3. **For a connector size 2.5 cm (1"):**  
Topstitch along both long edges, 1 cm (3/8") from each edge.  
**For a connector size 2 cm (3/4"):**  
Topstitch along both long edges, 6 mm (1/4") from each edge.



4. Add double-sided tape to the center area of the connector (wrong side).



5. Remove backing from double-sided tape and make a mark in the center of the connector.

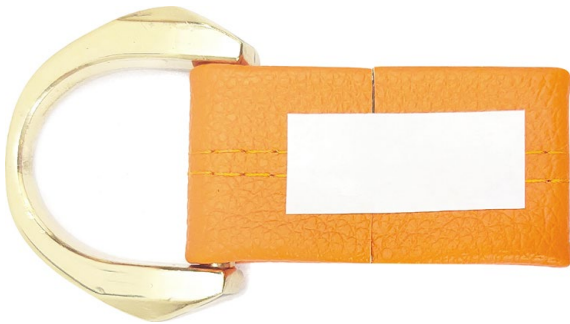


6. Insert a ring or rectangle through the connector and fold both short edges up to the center mark you previously made. Add some sewing clips to hold the ends in place.



7. Attach the connector, right side up to the main panel (or the location where you want to place your connector). All our patterns include symbols or markings that recommend connector placement. Transfer this from the corresponding pattern piece. You can add double-sided tape to keep the connector in place.

Topstitch as indicated in the photo. Ideally, use a narrow presser foot so that you can get as close to the top as possible.



8. **Optional:** Install rivet.



9. Repeat to install the other three connectors.

## Simple Connector (Option 2)



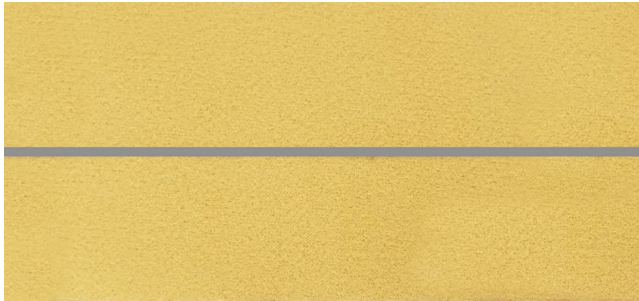
### *Materials:*

- ☐ Basic sewing supplies.
- ☐ 4 rectangles or rings: 2.5 cm (1") or 2 cm (3/4") according to the size you prefer for your straps.
- ☐ Sewing clips.
- ☐ 8 Rivets: 9 mm (3/8").
- ☐ 4 Strap ends: 2.5 cm (1") or 2 cm (3/4") according to the size you have chosen for your connectors.
- ☐ Double-sided tape 6 mm (1/4") or glue for faux leather or fabric (depending on the material used for the connector).



*Instructions:*

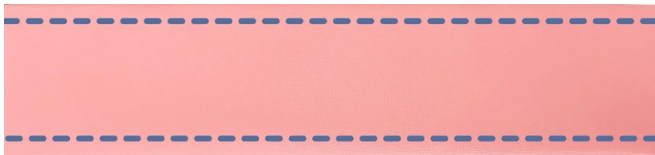
- 10.** Take connector piece and transfer the line that is included on the pattern piece (wrong side).



- 11.** Use glue or double-sided tape. Bring the edges towards the center.



- 12.** Topstitch along both long edges, 3 mm (1/8") from each edge.



- 13.** Add double-sided tape to the right side of the connector (wrong side).

Insert a ring or rectangle through the connector. Remove the backing from the double-sided tape and match both raw edges.

Add a strap end to the connector to cover the raw edges.



14. Now attach the connector to the main panel (or the location where you want to place your connector). All our patterns include symbols or markings that recommend connector placement. Transfer this from the corresponding pattern piece. You can add double-sided tape to keep the connector in place.

Install two rivets.



15. Repeat to make the other three connectors.

# Hidden Connector



## *Materials:*

- ❑ Basic sewing supplies.
- ❑ 4 rectangles or rings: 2.5 cm (1") or 2 cm (3/4") according to the size you prefer for your straps.
- ❑ Sewing clips.
- ❑ 4 Rivets: 9 mm (3/8").
- ❑ Double-sided tape 6 mm (1/4") or glue for faux leather or fabric (depending on the material used for the connector).



*Instructions:*

- 16.** Identify the three parts to create your hidden connector: Piece A, Piece B and a ring or rectangle.



- 18.** Use glue or double-sided tape. Bring the edges towards the center.



- 19.** Next, we will make some stitches that are only decorative.

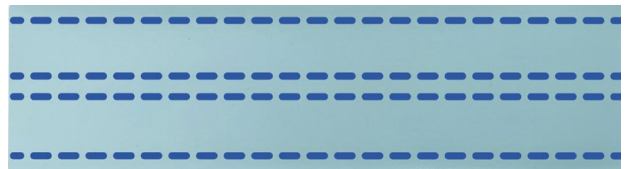
**For a connector size 2.5 cm (1"):**

Topstitch along both long edges, 1 cm (3/8") from each edge.

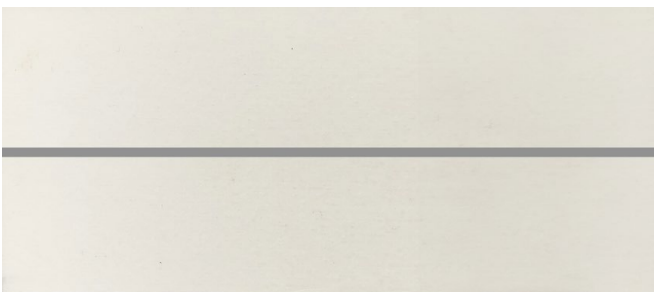
**For a connector size 2 cm (3/4"):**

Topstitch along both long edges, 6 mm (1/4") from each edge.

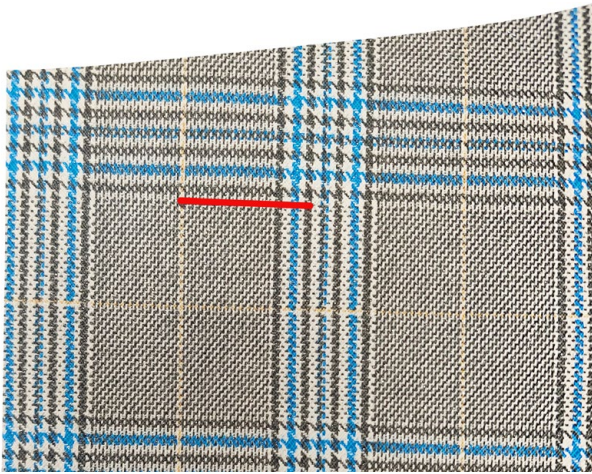
Next, topstitch along both long edges, this time 3 mm (1/8") from each edge.



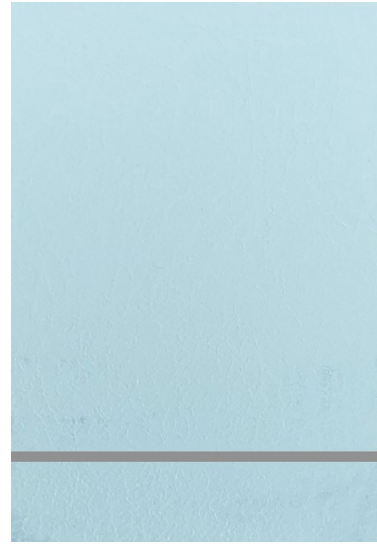
- 17.** Take connector (Piece A) and transfer the line that is included on the pattern piece (wrong side).



- 20.** Identify the location on the main panel where you want to install your connector. All our patterns include symbols or markings that recommend connector placement. Transfer this from the corresponding pattern piece. Mark a line that is the width of your connector (2.5 cm (1") or 2 cm (3/4") depending on what you have chosen). If you are using a pen, make sure that the ink will not run or smear.



- 22.** Take Piece B and make a mark 6 mm (1/4") from the bottom. This mark is for reference only.



- 21.** Cut the line with the help of a seam ripper. Make sure the width of the opening does not exceed the width of your connector.



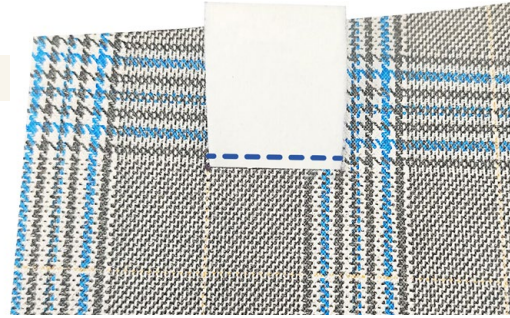
- 23.** Insert Piece B through the opening (wrong side up) just up to the mark (6 mm, 1/4") that you previously made.

Sew (3 mm, 1/8" seam allowance). Ideally, use a narrow presser foot and a small straight stitch length. Do not backstitch; instead, leave the thread tails from both ends long. Pull the top threads to the back and tie them off.

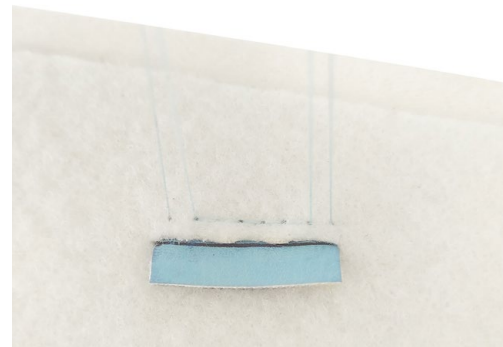
23-1



23-2



23-3

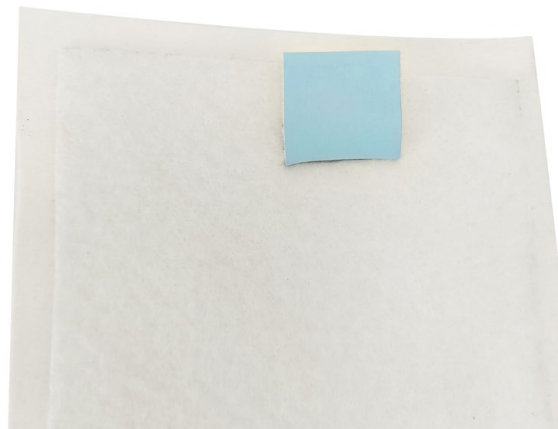


- 24.** Pull Piece B through the opening and press it to the wrong side.

23-3

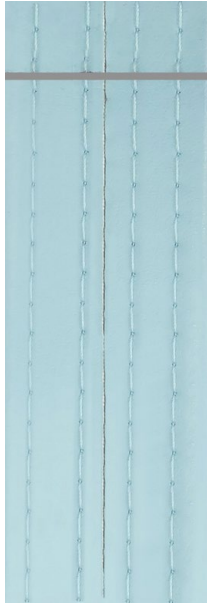


23-3

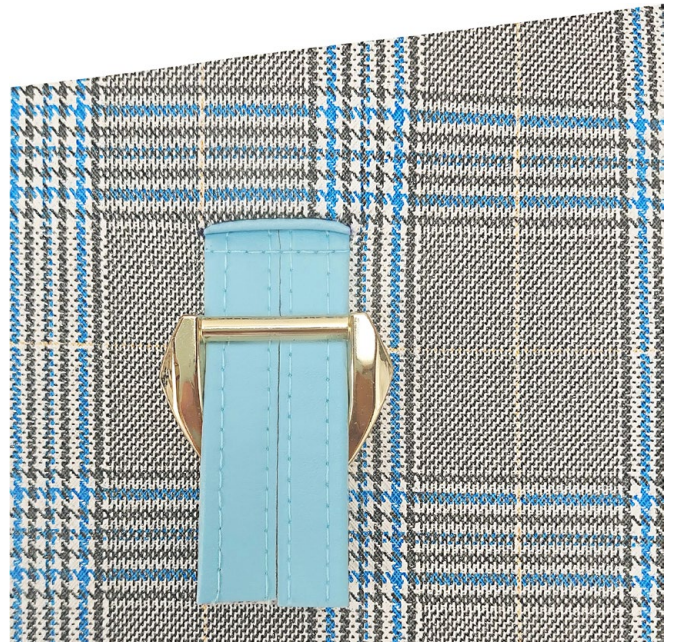




- 25.** Take Piece A and make another mark 6 mm (1/4") from the top. This mark is for reference only.



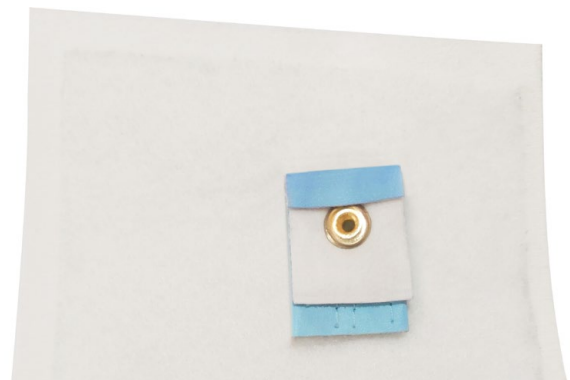
- 27.** Insert a ring or rectangle through the connector.



- 26.** Insert Piece A through the opening (wrong side up) just up to the mark (6 mm, 1/4") that you previously made. Sew (3 mm, 1/8" seam allowance). Ideally, use a narrow presser foot and a small straight stitch length. Do not backstitch; instead, leave the thread tails from both ends long. Pull these top threads to the back and tie them off.



- 28.** Pull Piece A through the opening and press it to the wrong side. Decide the length you want for your connector and install a rivet.



- 29.** This tutorial is inspired by the hidden connector method designed by Amy Lynne Designs. See original video here:

[https://www.youtube.com/watch?v=d6obf2t-YuI&ab\\_channel=AmyLynneDesigns](https://www.youtube.com/watch?v=d6obf2t-YuI&ab_channel=AmyLynneDesigns)

**3**  
CM

**1"**

**SIMPLE CONNECTOR  
(OPTION 1)**

*For a connector size:  
2.5 cm (1")*



**SIMPLE CONNECTOR  
(OPTION 1)**

*For a connector size:  
2 cm (3/4")*



**SIMPLE CONNECTOR  
(OPTION 2)**

*For a connector size:  
2.5 cm (1")*



**SIMPLE CONNECTOR  
(OPTION 2)**

*For a connector size:  
2 cm (3/4")*



**HIDDEN CONNECTOR  
PIECE (A)**

*For a connector size:  
2.5 cm (1")*



**HIDDEN CONNECTOR  
PIECE (B)**  
*For a connector size:  
2.5 cm (1")*

**HIDDEN CONNECTOR  
PIECE (A)**

*For a connector size:  
2 cm (3/4")*



**HIDDEN CONNECTOR  
PIECE (B)**  
*For a connector size:  
2cm (3/4")*

\* *Fuse with interfacing if you are using cotton or other lightweight fabric.*